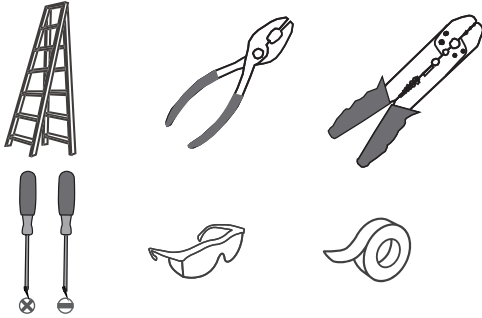


### Tools Required



### Light Source

30W  
**LED**

### ⚠ Warnings and Cautions

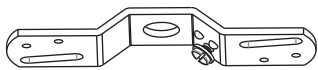
Turn off the electricity at the circuit breaker before installation. Consult a licensed electrician if in doubt about installation.

### Package Contents

**Preparation:** Identify and inspect all parts before beginning the installation.

Missing or damaged parts? Contact your original place of purchase.

#### PARTS BAG



**A** Crossbar  
x 1



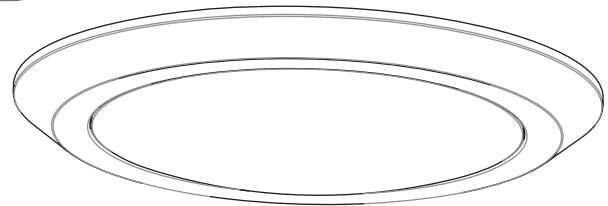
**C** Outlet Box Screw  
x 2



**B** Mounting Screw  
x 2



**D** Wire Connector  
x 3



**E** Fixture Body  
x 1

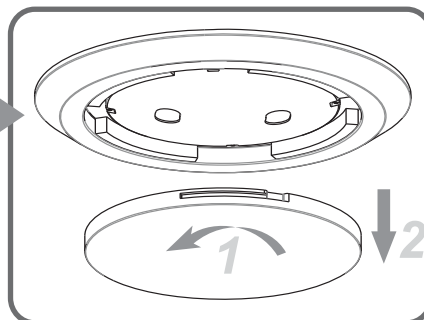
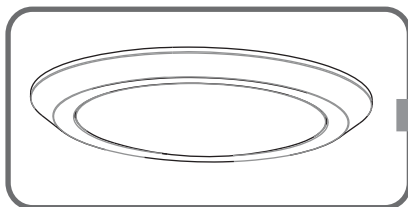
### Table of Contents

Remove Sponge Strips	Inner Backplate	Lanyard	Wiring	Fixture Body	Shade
<b>STEP 1</b>	<b>STEP 2</b>	<b>STEP 3</b>	<b>STEP 4</b>	<b>STEP 5</b>	<b>STEP 6</b>

### STEP 1

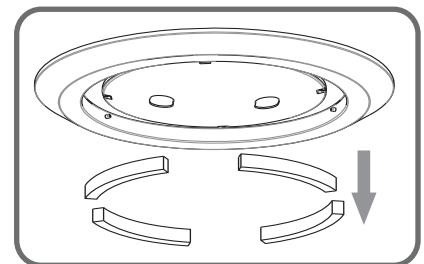
1

Remove shade



2

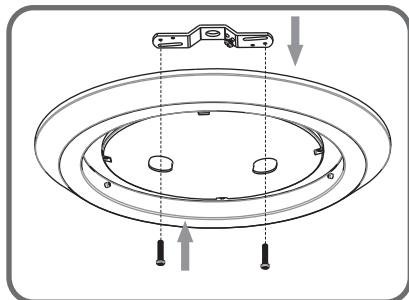
Remove sponge strips



## STEP 2

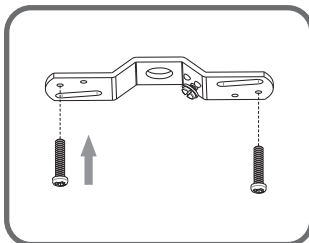
1

Determine mounting holes for mounting screws



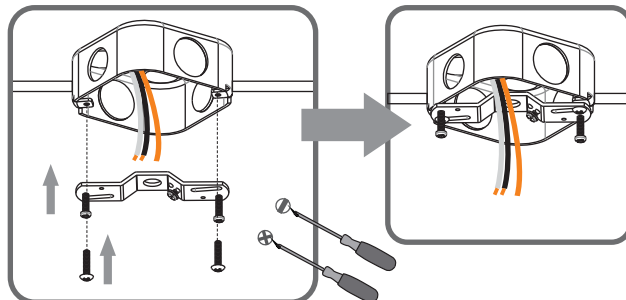
2

Install mounting screws

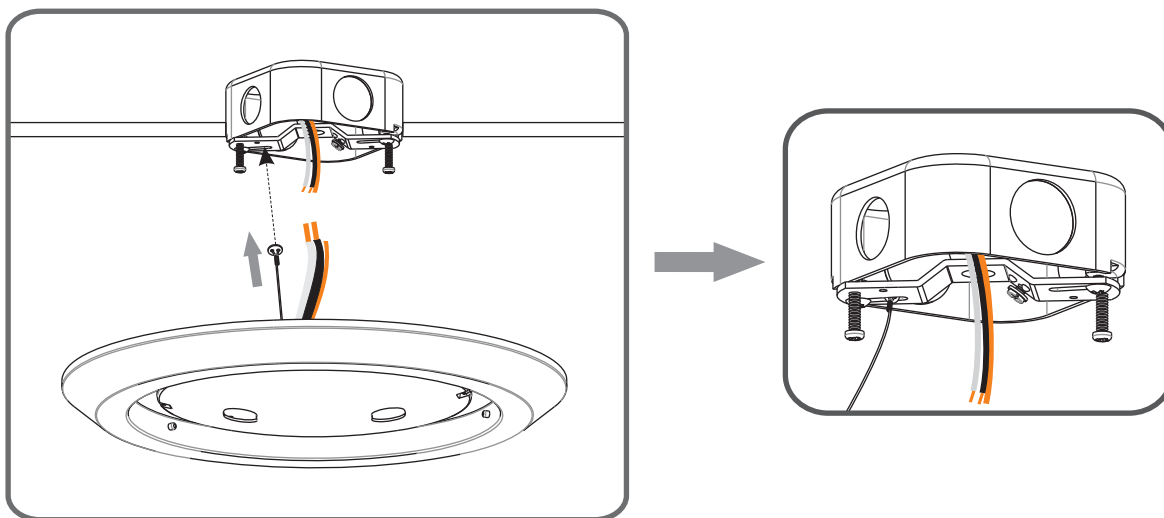


3

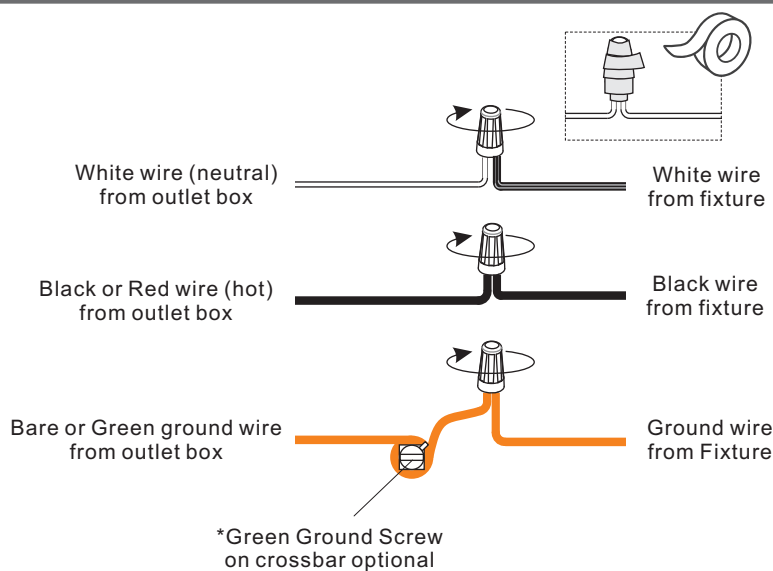
Install Crossbar



## STEP 3



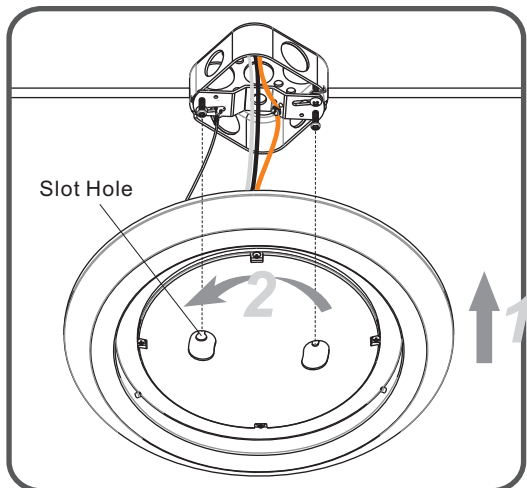
## STEP 4



## STEP 5

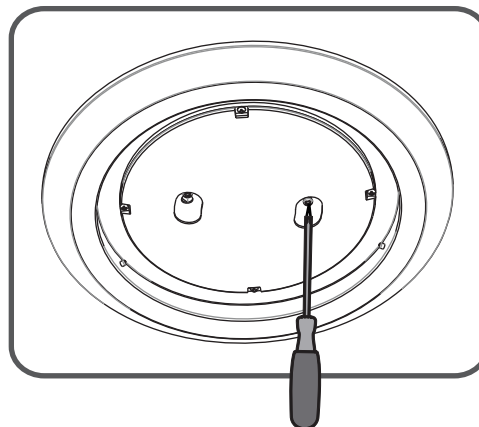
1

Fit slot holes to mounting screws



2

Tighten mounting screws



## STEP 6

